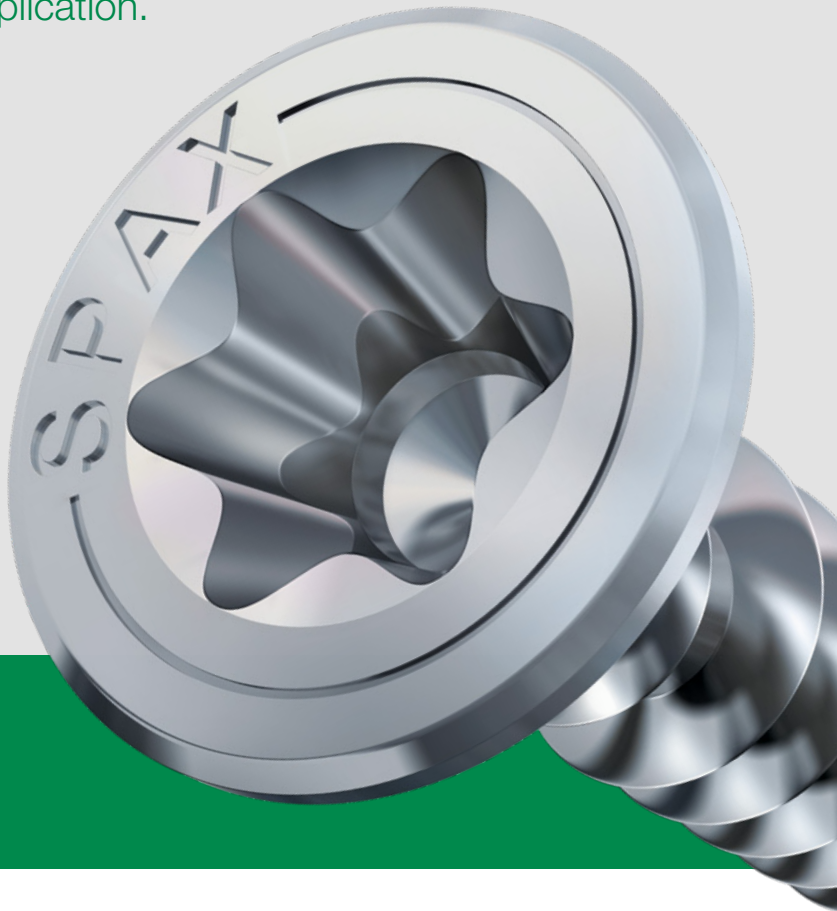




THE SCIENCE OF SCREWS

The right screw
for every application.



MADE IN

GERMANY

4CUT

Reduces splitting
effectively



MADE IN

GERMANY

What makes SPAX different from other screws?

T-STAR plus

Positive and secure fit of the BIT and better driving, eg. when working overhead.



MULTI Head

Flush countersinking. Cuts through wood and stops on metal.



4CUT Point

Starting at screw lengths of 160 mm, the special moulding at the end of the partial thread significantly reduces the screwing-in torque.



4CUT

No pre-drilling (wood-dependent), its point effectively reduces splitting. The square point pushes aside the fibre of the wood and reduces the screwing-in torque.



Which head shape for which application?



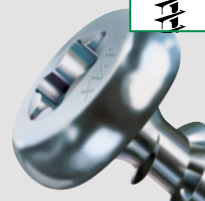
MULTI Head

For screwing boards to beams whenever flush countersinking of the head is required.



Pan head

Suitable for thin fittings with pre-drilled hole. Lies flat on the surface of the material.



Raised countersunk head

Decorative fastener for furniture or door fittings, skirting boards and decorative panelling. Easy to countersink and looks good.



Washer head

For screwing rear panels (with small dimensions) or whenever really secure connections are needed, ie. high load bearing capacity and high tensile forces (with large dimensions of 6–10 mm in diameter).

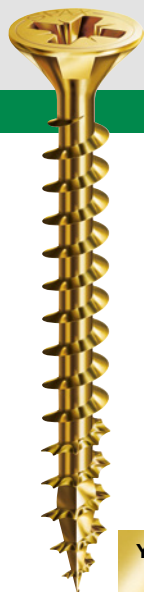


Cylindrical head

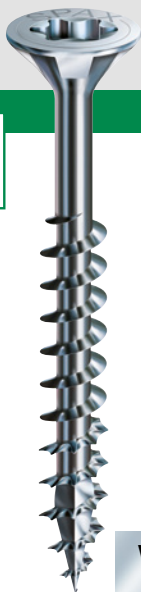
With a small head diameter for special applications, eg. SPAX decking screws



What exclusive **COATINGS**
does SPAX offer?



**YELLOX
A2L**



**WIROX
A9J**

Which **MATERIAL**
should I use outdoors?

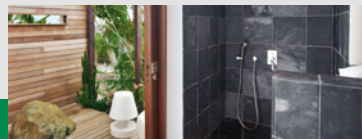
Stainless steel A2 for outdoor
use with direct exposure to the
weather.

Stainless steel A4 for applications
in coastal areas.

Eurocode 5: Service class 3
(class 3)



What are the special
CHARACTERISTICS of stainless steel?



WHEREVER DEPENDABLE SCREW CONNECTIONS ARE REQUIRED:

SPAX made of **stainless steel** are particularly suitable for outdoor use.
They are available in two versions: **stainless steel A2** for outdoor applications directly exposed
to the weather and for use in damp and wet areas eg. kitchen and bathroom. For applications in
coastal areas, we recommend **stainless steel A4**. Stainless steel has a high chromium content,
which results in a protective layer forming on the surface. Further alloying constituents such as
nickel, molybdenum, manganese and niobium give the screws even better corrosion resistance.

What are the special **CHARACTERISTICS** of WIROX?

**WIROX
A9J**

Zinc 10 μm
class 2
T2/C2nw

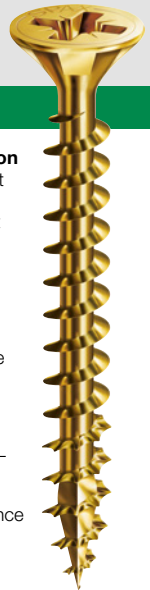


- **High protection against corrosion**
Compared with conventional blank zinc-plated screws, SPAX with the optimised WIROX A9J surface offers significantly higher corrosion protection.
- **High zinc layer thickness**
The thickness of the zinc coating has been increased by 25% and is now 10 μm . As a result, the screws satisfy Class T2/C2nw in accordance with future standard EN 14592 for roofed outdoor areas.
- **Eurocode 5**
With a zinc coating thickness of 10 μm , the screw meets service class 2 requirements for use in roofed outdoor areas
- **EN 1670 standard**
SPAX with the optimised WIROX A9J surface meet class 4, ("Very high resistance"), according to this European standard for the corrosion resistance of locks and fittings.
- **Slide coating**
The SPAX is covered with a slide coating, which reduces screwing-in torques.
- **Environmentally friendly**
WIROX is free of chrome VI, and thus significantly more environmentally friendly than conventional surfaces both in production and in use.

What are the special **CHARACTERISTICS** of YELLOX?

**YELLOX
A2L**

Zinc
class 1



- **Increased corrosion protection**
Achieves corrosion protection that is more than 6 times greater than that offered by blue zinc plating at the same surface thickness (layer thickness of 4–6 μm with artificial atmospheric corrosion).
- **Eurocode 5**
With a zinc coating thickness of 4–6 μm , the screw meets service class 1 requirements for use in enclosed interiors.
- **EN 1670 standard**
SPAX with optimised YELLOX A2L surface fulfil Grade 3 („high resistance“) as per this European standard for the corrosion resistance of locks and fittings.
- **Slide coating**
The SPAX is covered with a slide coating, which reduces screwing-in torques.
- **Environmentally friendly**
Is free of chrome(VI) and far more environmentally-friendly than conventional surfaces, both during manufacturing and usage.

In future, these screws for indoor use will still retain their yellow finish, offer greater corrosion protection and be chromium(VI)-free (i.e. environment- and health-friendly).

SPAX Applications

SPAX Flooring screw

APPLICATION

- For secure fixings of flooring panels on old wooden floors when renovating (eg. OSB)

FEATURES

- Fixing thread
- WIROX surface A9J

ADVANTAGES

- Fixing thread holds the board in place
- Minimises creaking of floor structure



SPAX Floor board screw

APPLICATION

- For laying solid wood floors

FEATURES

- Drill point
- 60° countersunk head with milling ribs
- WIROX surface A9J

ADVANTAGES

- No splitting of the tongue
- Milling ribs make counter-sinking easier
- Invisible screwing of tongue and groove boards

SPAX Centerdrilled screw

APPLICATION

- Connecting furniture elements
- Fastening skirting boards and curtain boards

FEATURES

- WIROX surface A9J
- Cross recess Z

ADVANTAGES

- No pre-drilling (wood-dependent)
- Quick and safe fastening with reduced driving-in torque
- Secure hold of the decorative cap



SPAX MDF screw

APPLICATION

- Fastening of fibreboards (MDF/HDF)

FEATURES

- *CUT point*
- WIROX surface A9J
- Small 75° milling head

ADVANTAGES

- No pre-drilling (wood-dependent)
- Effectively reduces splitting and bulging of the material

When should I use a full thread?

Fixing fittings with pre-drilled hole to, eg., wooden beams.

- Absorption of high tensile forces by the full thread.
- Higher compressive force thanks to the full thread.



When should I use a partial thread?

For screwing boards to beams.

The non-threaded part must be the same length or longer than the board to be fixed.

- Secure connection with reduced gap formation because the thread does not lock up.
- High pre-tension between the head and the thread section that acts only in the lower component.
- Ideal for wood and wood-based materials (eg. chipboard).



SPAX HI.FORCE washer head



APPLICATION

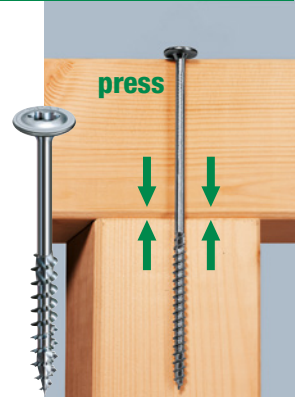
- Construction: for screwing together battens and squared timbers
- Stairway construction: for fixing treads and risers to the stringer

FEATURES

- Washer head
- Partial thread
- WIROX surface A9J

ADVANTAGES

- Better tightening of connections also of warped boards
- Significantly better corrosion protection compared with conventional coatings
- No pre-drilling (wood-dependent)



SPAX IN.FORCE full thread

APPLICATION

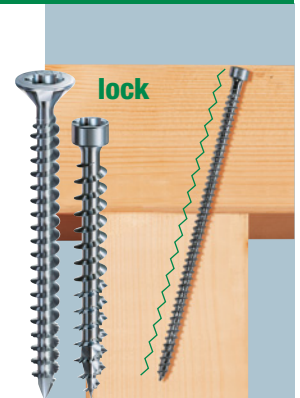
- Construction: carports, pergola, etc.

FEATURES

- Cylindrical head
- Full thread
- WIROX surface A9J

ADVANTAGES

- Replaces the angle connector
- Cross tension reinforcement: higher component load factor possible
- Lateral pressure reinforcement: higher forces can be transferred
- Reinforcement of dowel pin connections



SPAX Decking screw

APPLICATION

- Particularly suitable for outdoor wooden decking

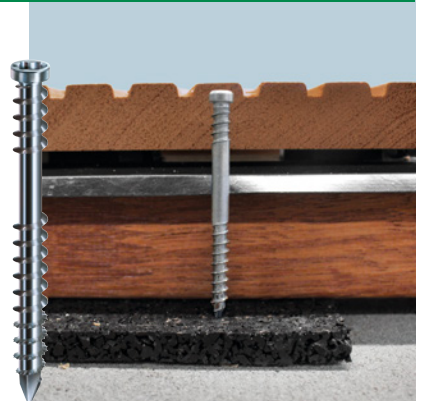
FEATURES

- Stainless steel A2 or A4
- Small cylindrical head
- Fixing thread

ADVANTAGES

- CUT point
- Fixing thread holds the wooden decking boards securely in place on the substructure
- Permanent corrosion protection
- Easy fastening, even in hardwood.*

* Predrilling using a SPAX drill 2 step is recommended for hardwoods.



SPAX – Where do they come from?

SPAX – Made in Germany



SPAX is not only called “international” – it actually is!

With our workforce of some 500 employees, our manufacturing base is at our production plant in Ennepetal, while a number of distribution companies support us in 9 different countries.

Safety, quality and dependability since 1967.

Trade professionals have to be able to rely 100% on their materials. That's why SPAX has been the brand for professionals for 50 years: with quality Made in Germany and innovative details that make working easier and faster.



SPAX International GmbH & Co. KG
ALTENLOH, BRINCK & CO - GROUP SINCE 1823

Kölner Straße 71–77 · 58256 Ennepetal · Germany
Tel.: +49-23 33-799-1967 · Fax: +49-23 33-799-199
info@SPAX.com · www.SPAX.com

SPAX
WE CARE 



SPAX Artikel-Nr. 6060

